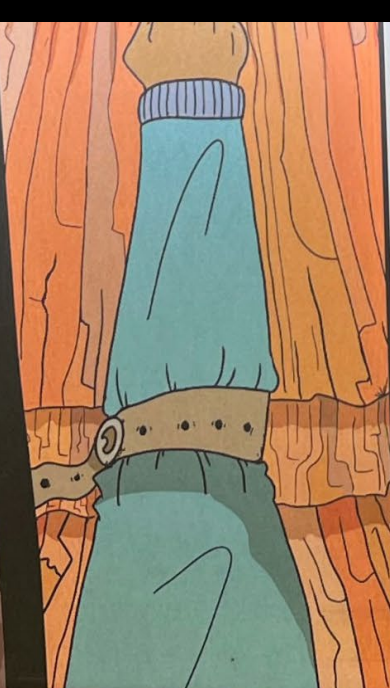


Portals

Visual Story



Created by



Access
2Arts

Making disability and art work

Desert
FESTIVAL

REDHOT
ARTS

Contents

Visual Story

Key Information

The Details

The Venue

The Creatives

Content Warnings

Sensory Information

On the Day

Entering the exhibition

During the show

The Exhibition

The Artworks

Contact

Desert Festival acknowledges the Central Arrernte people as the Traditional Custodians of the land on which we live and work. We pay our respects to their history, their living culture, and their Elders past, present and emerging.

Visual Story

Visual Stories are designed to help prepare you for your visit. They include information about the venue and what will happen during the performance.

Visual Stories are suitable for people who wish to be familiar with what to expect prior to attending. Please note that the information includes spoilers which may impact on your experience of the production.

This Visual Story also contains Audio Descriptions of elements of the performance to assist people who may be blind, low vision or need additional visual information to support their visit.

This Visual Story has been created by Access2Arts in consultation with Red Hot Arts and the Desert Festival.

Key Information



The details

Overview

Step into 'Portals,' an evocative exhibition by the Stick Mob creatives Seraphina Newberry (Arrernte/Pitjantjatjara), Alyssa Mason (Arrernte/Pitjantjatjara), Wendy Cowan (Irish/British), and Declan Miller (Arrernte/Anmatyerre/Scottish). 'Portals' invite you to enter expansive worlds, formed by the power of collective storytelling.

In the worlds of Stick Mob, portals are not just physical gateways but dynamic entities that challenge and reshape reality. The mix of cultural, quantum, sci-fi, and everyday stories opens up time-spaces for identities to shift, time to warp, and for matters such as blood, rocks, filing cabinets to be anything but inert or passive.

Exhibition

Exhibition runs from Fri 20th – Sat 28th September

Watch This Space Gallery opening hours:

- Wed-Fri: 12:00pm – 5:00pm
- Sat: 10:00am – 2:00pm

Ages

All ages

The venue

The exhibition is Watch This Space – Artist Run Initiative is part of the Desert Festival.

Access is via the entrance from the carpark at 8 Gap Road, a 5-10 minute walk from the CBD.

The space is wheelchair accessible and guide dog friendly. There are accessible toilets to the east, entered via the gallery space.

Please ask WTS and Desert Festival staff or volunteers if you need assistance.





The creatives

Stick Mob creatives:

Alyssa Mason (Arrernte/Pitjantjatjara)

Declan Miller (Arrernte/Anmatyerre/Scottish)

Seraphina Newberry (Arrernte/Pitjantjatjara)

Wendy Cowan (Irish/British)

Stick Mobs creative approach is a celebration of hanging out together to tell stories, sketch, and laugh a lot.

Content Warnings

The content for this show contains;

Climate change

Friendship

Intergenerational trauma

Cultural life and relationships in Central Australia

Animals such as Snakes and Dogs

Videos of gallery visitors



Sensory Information

This exhibition combines visual images, text to read, sounds and projected movement.

There is one installation that might project a video of you onto the artwork as you stand in front of it. If you don't like this you can move away from the camera easily.

It may be a bit busy and noisy with other visitors and people chatting.

You can move away to the quiet space, go outside or leave at any time.

ch this SPACE
RUN INITIATIVE

On the day



Entering the exhibition

On the approach to the gallery there are several exhibits outside, along the western wall of the gallery and around the front door. They are large bright comic-like graphic characters, with bold black outlines, they seem to look out of window boxes against the front wall. The windows are illuminated with strips of coloured light around the edges. Alongside excerpts or snippets from the novels describing the characters are attached to the wall to the left of the entrance.

Enter the gallery through the doorway, turn right to progress around the space in an anticlockwise direction. Statements appear alongside each exhibit naming and describing the portal. Often a small maquette or model of the piece is also displayed on a plinth near the finished piece.

During the show

People will walk around the gallery during the show. They will generally walk around in an anti-clockwise direction, stopping to read the wall text or look at each artwork for a while.

They may chat quietly about the artworks with their companions.

You can leave the gallery at any time, and there is a quieter space on the couch at the front of the gallery if you need some time out.



The exhibition



The artworks

The first exhibit against the southern wall, is **pigeon hole portal** by Wendy Cowan. A suspended bookshelf is attached to the wall. Like in any staff room the various pigeonholes here are stuffed with books, paper, and other objects like a cup, a jar of Vegemite and various sticky notes. In the middle is a light box with a black surround, it scrolls through a video featuring a series of loosely drawn gestural landscapes to become superimposed with a grid of black lines and rectangular room or boxlike images behind barbed wire and other fences.

To the right of the pigeonhole installation a round record shaped Clock like piece shows a series of black silhouettes travelling around the disc, against a collage of covers from various planning documents. The inner circle of the disc shows the map of Central Australia around Alice Springs.

To the left is a large charcoal drawing also by Wendy Cowan, of a woman (delia) with a snake draped around her neck.

To the east is a piece by Declan Miller, entitled **If Only Portal**. This piece places the viewer in Arrernte Country. You stand in front of the screen and a camera captures your image and inserts it into the video playing in front of you, you are “entering a portal” yourself. A 900 x 600mm screen shows a graphic black outline of white ghost gums on either side of a pale blue river, with mountains ranges in the background and an image of whoever has “entered the portal”.

Further along the east wall is another projection. (*Trip hazard: A white rectangle of tape on the floor guides people around the projector.*) **This Rainbow Serpent Portal** is an animation by Seraphina Newberry. The body of the snake is an undulating form in purple, lilac and electric pink, that encircles the outer edge of this portal. Within is a vision of a vast universe, created with dark undulating lines and blocks of vibrant colours forming nebulas and other planetary worlds. Around the portal, moving blue points dot the dark sky like stars.

In the northwest corner of the gallery is **Painting Portal** by Alyassa Mason, an installation of Caterpillars and Dingos, these are two significant creation stories of the region (*some care needs to be taken, as there is no rope or separation of this space from the main area*).

At the front are two Akngwelye-wild dogs (1500mm L x 700mm H) made of cardboard. One is painted orange with dark tiger like stripes like a thylacine, the one chasing is a yellowy brown cheeky dog, hair raised along its hunched back, narrowed eyes and bared white teeth.

Behind the dogs are two taller Anthwerrke - caterpillars on red rocks, one painted green with yellow spots, the other is brown with dark stripes.

Against the rear wall is a large projection of a rough circular portal, its' centre a throbbing yellow, with concentric wobbly circles that encounter an outer circle of smaller spiralling circles around the outer edges. The installation is constructed of cardboard, mdf board and paint.

Along the western wall inside the gallery, are excerpts from three graphic novels. Large poster size copies of their front covers appear side by side Mixed Feelings Book 2 - Declan Miller, Exo-Dimensions Book 2 - Serafina Newbury, Storm Warning Book 2 - Alyssa Mason (illustrator) and Lauren Boyle (writer). These graphic novels address topics such as climate change weird friendships intergenerational trauma and healing and cultural life and relationships in Central Australia. Beneath are three large 600 x 900mm examples of a double page spread from each of the novels.



Contact

To discuss your access needs, please contact the Desert Festival team on 08 8952 2392 or admin@redhotarts.com.au.

Staff and volunteers will also be available on site to assist.





**Thank you, we
hope you enjoy
the show**